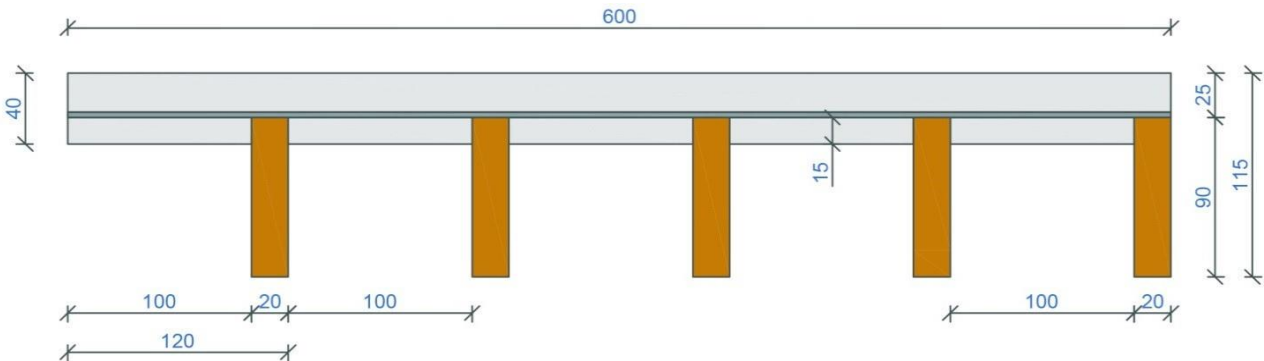


REAL WOOD grill ceiling and wall claddings



*All dimensions are specified in mm

Technical specification

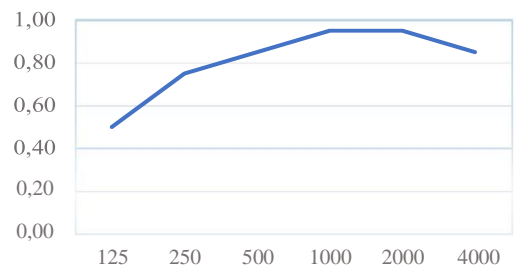
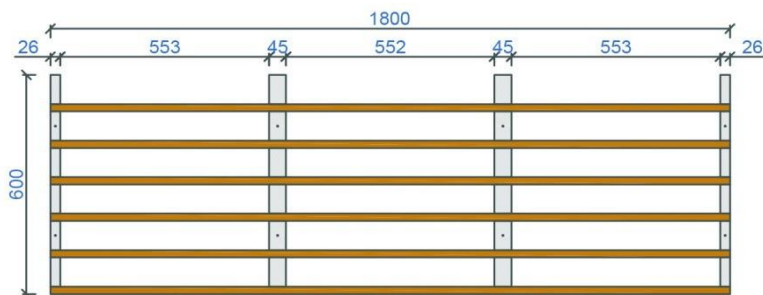
| | |
|---------------------------------|---|
| Base material | Real wood: Pine, Larch, Birch, Oak etc. |
| Lath size wx/hx | 20x90mm |
| Sloted cross bar - black coated | 45x35mm+26x35mm |
| No. of blades/panel 600mm | 5 |
| Element weight kg/m2 | 7,29 |
| Surface | Standard WB coating , oil /wax coating, staining etc. |
| Fire classification | up to B s1.d.0 , EU norm EN 13501-1 |
| Humidity resistance | 70% standard to 95% treated |
| Acoustical treatment | Black Topiq 15mm mineral fibre pad or acoustical fleece 155g/m2 |
| Open area | 83% |
| Suspension | Standard plaster board studs or wood trims - direct mount |

Sound absorption - using lay- in 15mm TOPIQ mineral fibre pad

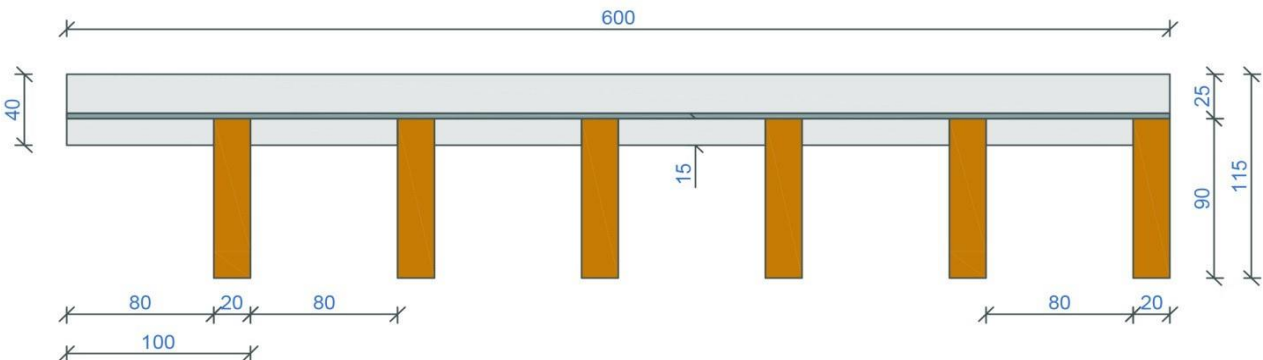
| PRODUCT | α_w | 125 | 250 | 500 | 1000 | 2000 | 4000 |
|---------|------------|------|------|------|------|------|------|
| 6x20x60 | 0,85 | 0,50 | 0,75 | 0,85 | 0,95 | 0,95 | 0,85 |

Sound absorption chart

*All dimensions are specified in mm



REAL WOOD grill ceiling and wall claddings



Technical specification

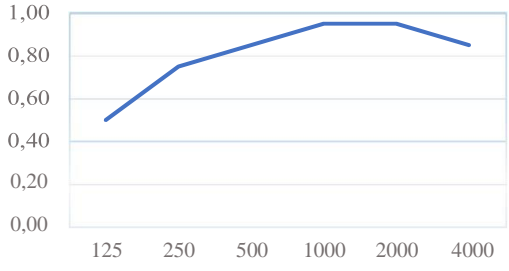
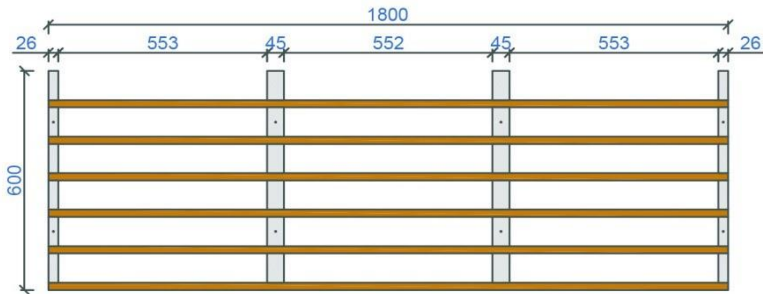
| | |
|----------------------------------|---|
| Base material | Real wood: Pine, Larch, Birch, Oak etc. |
| Lath size wx/hx | 20x90mm |
| Slotted cross bar - black coated | 45x35mm+26x35mm |
| No. of blades/panel 600mm | 6 |
| Element weight kg/m ² | 8,748 |
| Surface | Standard WB coating , oil /wax coating, staining etc. |
| Fire classification | up to B s1.d.0 , EU norm EN 13501-1 |
| Humidity resistance | 70% standard to 95% treated |
| Acoustical treatment | Black Topiq 15mm mineral fibre pad or acoustical fleece 155g/m ² |
| Open area | 80% |
| Suspension | Standard plaster board studs or wood trims - direct mount |

Sound absorption - using lay- in 15mm TOPIQ mineral fibre pad

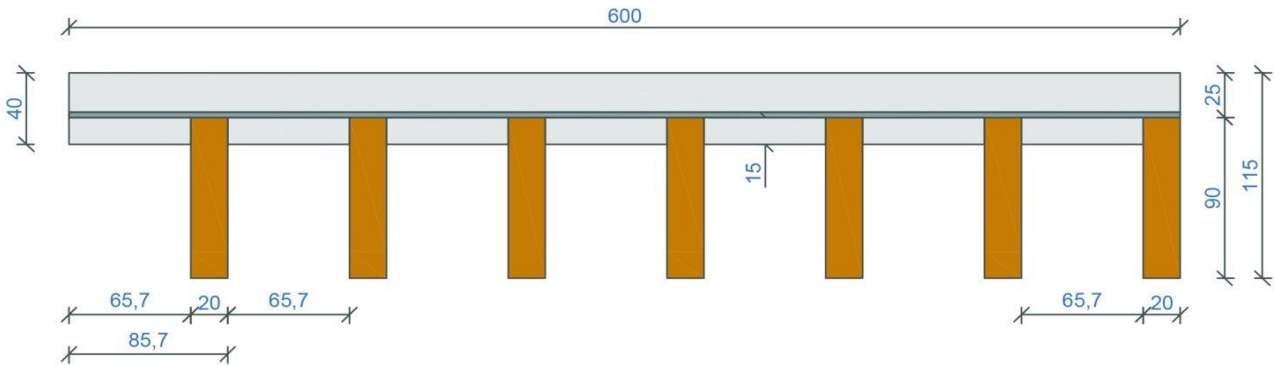
| PRODUCT | α_w | 125 | 250 | 500 | 1000 | 2000 | 4000 |
|---------|------------|------|------|------|------|------|------|
| 6x20x90 | 0,85 | 0,50 | 0,75 | 0,85 | 0,95 | 0,95 | 0,85 |

Sound absorption chart

*All dimensions are specified in mm



REAL WOOD grill ceiling and wall claddings



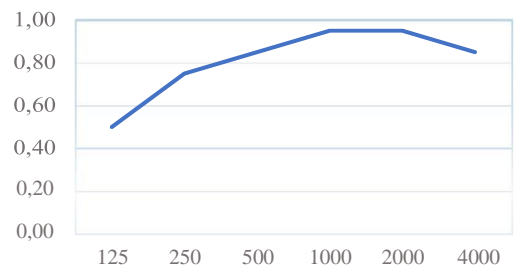
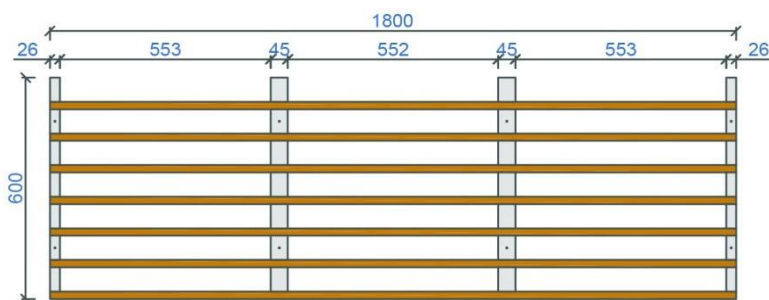
Technical specification

| | |
|----------------------------------|---|
| Base material | Real wood: Pine, Larch, Birch, Oak etc. |
| Lath size wx/hx | 20x90mm |
| Slotted cross bar - black coated | 45x35mm+26x35mm |
| No. of blades/panel 600mm | 7 |
| Element weight kg/m ² | 10,21 |
| Surface | Standard WB coating , oil /wax coating, staining etc. |
| Fire classification | up to B s1.d.0 , EU norm EN 13501-1 |
| Humidity resistance | 70% standard to 95% treated |
| Acoustical treatment | Black Topiq 15mm mineral fibre pad or acoustical fleece 155g/m ² |
| Open area | 77% |
| Suspension | Standard plaster board studs or wood trims - direct mount |

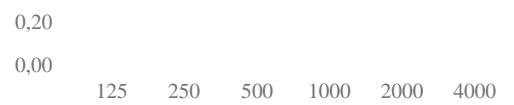
Sound absorption - using lay- in 15mm TOPIQ mineral fibre pad

| PRODUCT | α_w | 125 | 250 | 500 | 1000 | 2000 | 4000 |
|---------|------------|------|------|------|------|------|------|
| 7x20x90 | 0,85 | 0,50 | 0,75 | 0,85 | 0,95 | 0,95 | 0,85 |

Sound absorption chart

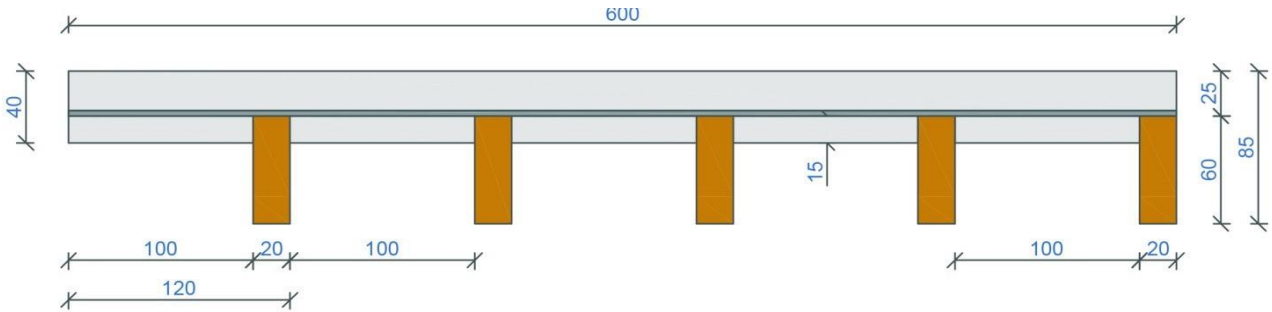


| | | | | | | | |
|--|------------|-----|--|-----|------|------|------|
| | α_w | 125 | | 500 | 1000 | 2000 | 4000 |
|--|------------|-----|--|-----|------|------|------|



| | | | | | | | |
|--|------|------|--|------|------|------|------|
| | 0,85 | 0,50 | | 0,85 | 0,95 | 0,95 | 0,85 |
|--|------|------|--|------|------|------|------|

SONICLINE 5x20x60

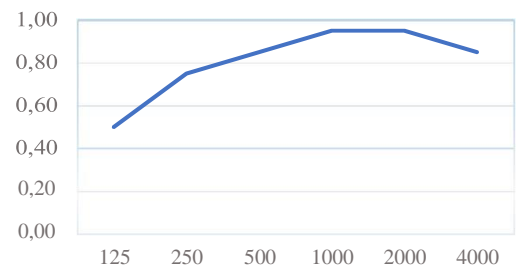
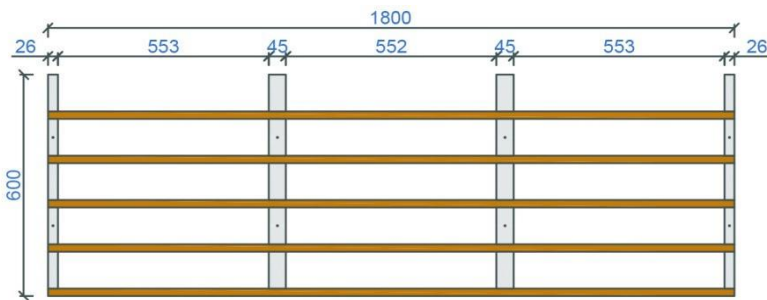


*All dimensions are specified in mm

Technical specification

| | |
|----------------------------------|---|
| Base material | Real wood: Pine, Larch, Birch, Oak etc. |
| Lath size wx/hx | 20x60mm |
| Sloted cross bar - black coated | 45x35mm+26x35mm |
| No. of blades/panel 600mm | 5 |
| Element weight kg/m ² | 4,86 |
| Surface | Standard WB coating , oil /wax coating, staining etc. |
| Fire classification | up to B s1.d.0 , EU norm EN 13501-1 |
| Humidity resistance | 70% standard to 95% treated |
| Acoustical treatment | Black Topiq 15mm mineral fibre pad or acoustical fleece 155g/m ² |
| Open area | 83% |
| Suspension | Standard plaster board studs or wood trims - direct mount |

Sound absorption chart

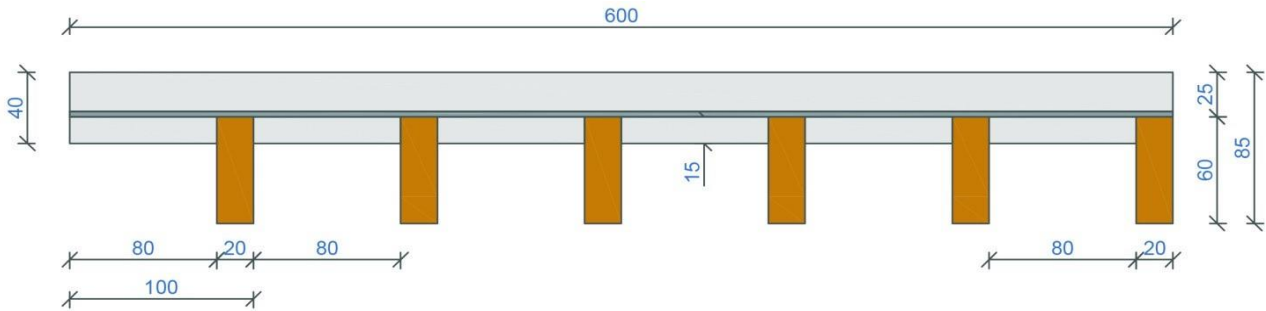


| PRODUCT | α_w | 125 | 250 | 500 | 1000 | 2000 | 4000 |
|---------|------------|-----|-----|-----|------|------|------|
|---------|------------|-----|-----|-----|------|------|------|

0,20
0,00
125 250 500 1000 2000 4000

| | | | | | | | |
|---------|------|------|------|------|------|------|------|
| 6x20x60 | 0,85 | 0,50 | 0,75 | 0,85 | 0,95 | 0,95 | 0,85 |
|---------|------|------|------|------|------|------|------|

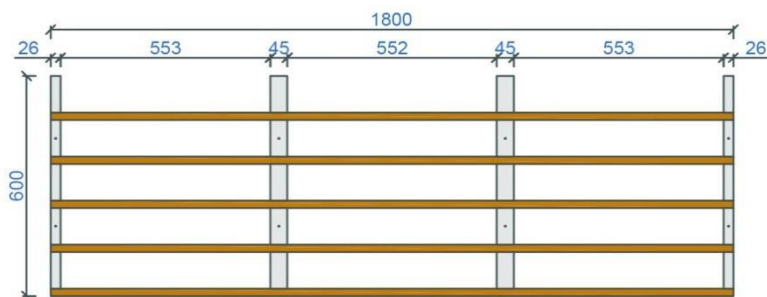
SONICLINE 6x20x60



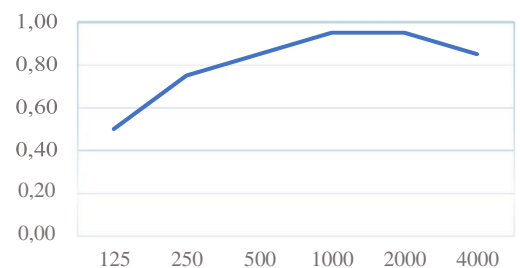
*All dimensions are specified in mm

Technical specification

| | |
|----------------------------------|---|
| Base material | Real wood: Pine, Larch, Birch, Oak etc. |
| Lath size wx/hx | 20x60mm |
| Slotted cross bar - black coated | 45x35mm+26x35mm |
| No. of blades/panel 600mm | 6 |
| Element weight kg/m2 | 5,83 |
| Surface | Standard WB coating , oil /wax coating, staining etc. |
| Fire classification | up to B s1.d.0 , EU norm EN 13501-1 |
| Humidity resistance | 70% standard to 95% treated |
| Acoustical treatment | Black Topiq 15mm mineral fibre pad or acoustical fleece 155g/m2 |
| Open area | 80% |
| Suspension | Standard plaster board studs or wood trims - direct mount |



Sound absorption chart

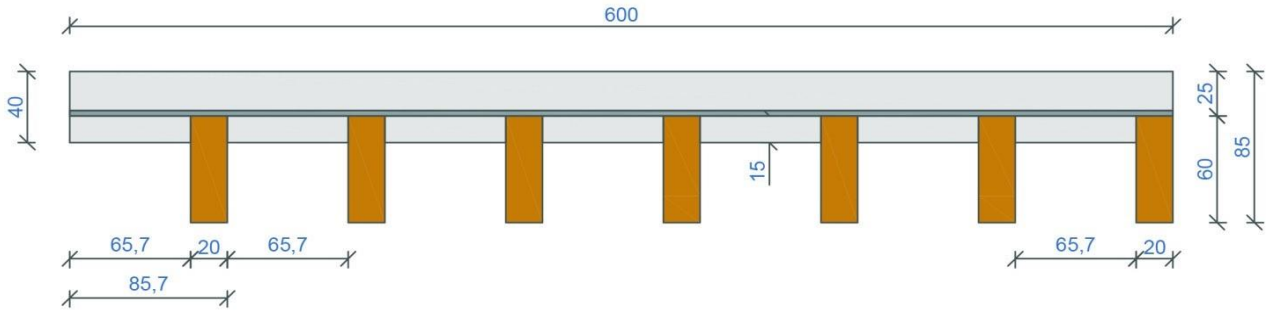


| PRODUCT | α_w | 125 | 250 | 500 | 1000 | 2000 | 4000 |
|---------|------------|-----|-----|-----|------|------|------|
|---------|------------|-----|-----|-----|------|------|------|



| | | | | | | | |
|---------|------|------|------|------|------|------|------|
| 5x20x90 | 0,85 | 0,50 | 0,75 | 0,85 | 0,95 | 0,95 | 0,85 |
|---------|------|------|------|------|------|------|------|

SONICLINE 7x20x70

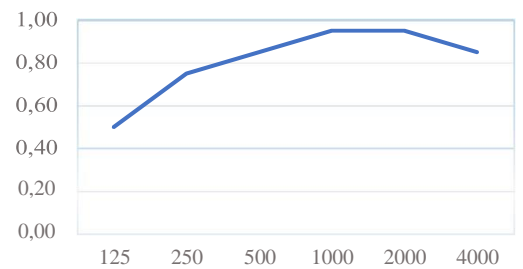
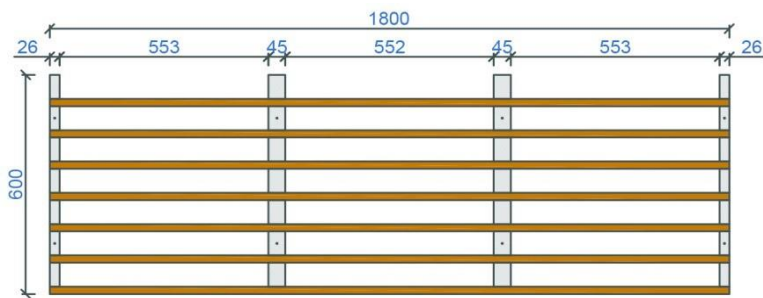


*All dimensions are specified in mm

Technical specification

| | |
|----------------------------------|---|
| Base material | Real wood: Pine, Larch, Birch, Oak etc. |
| Lath size wx/hx | 20x60mm |
| Slotted cross bar - black coated | 45x35mm+26x35mm |
| No. of blades/panel 600mm | 7 |
| Element weight kg/m2 | 6,80 |
| Surface | Standard WB coating , oil /wax coating, staining etc. |
| Fire classification | up to B s1.d.0 , EU norm EN 13501-1 |
| Humidity resistance | 70% standard to 95% treated |
| Acoustical treatment | Black Topiq 15mm mineral fibre pad or acoustical fleece 155g/m2 |
| Open area | 77% |
| Suspension | Standard plaster board studs or wood trims - direct mount |

Sound absorption chart



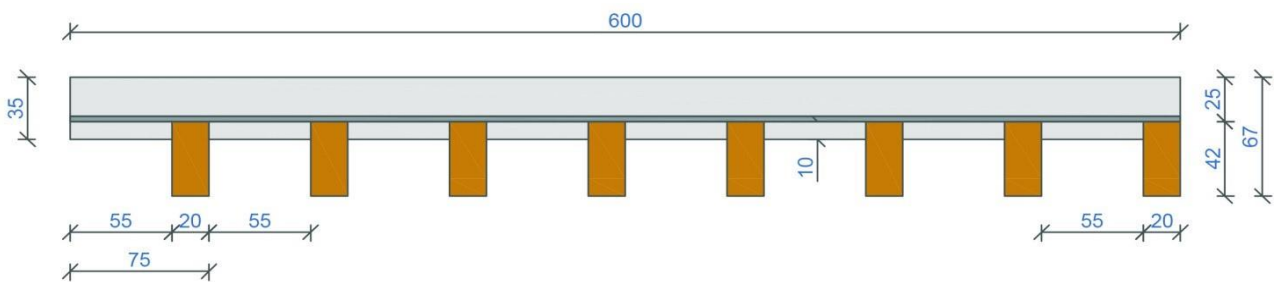


REAL WOOD grill ceiling and wall claddings

Sound absorption - using lay- in 15mm TOPIQ mineral fibre pad

0,20
0,00
125 250 500 1000 2000 4000

REAL WOOD grill ceiling and wall claddings



*All dimensions are specified in mm

Technical specification

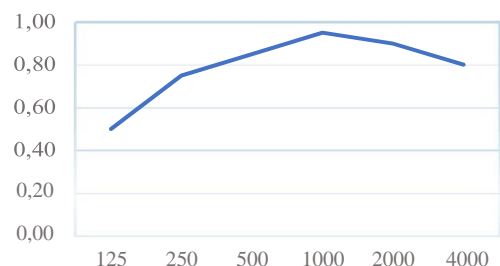
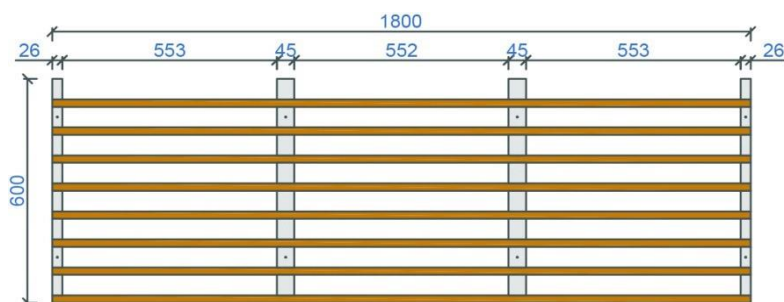
| | |
|---------------------------------|---|
| Base material | Real wood: Pine, Larch, Birch, Oak etc. |
| Lath size wx/hx | 20x42mm |
| Sloted cross bar - black coated | 45x35mm+26x35mm |
| No. of blades/panel 600mm | 8 |
| Element weight kg/m2 | 5,44 |
| Surface | Standard WB coating , oil /wax coating, staining etc. |
| Fire classification | up to B s1.d.0 , EU norm EN 13501-1 |
| Humidity resistance | 70% standard to 95% treated |
| Acoustical treatment | Black Topiq 15mm mineral fibre pad or acoustical fleece 155g/m2 |
| Open area | 73% |
| Suspension | Standard plaster board studs or wood trims - direct mount |

Sound absorption - using lay- in 15mm TOPIQ mineral fibre pad

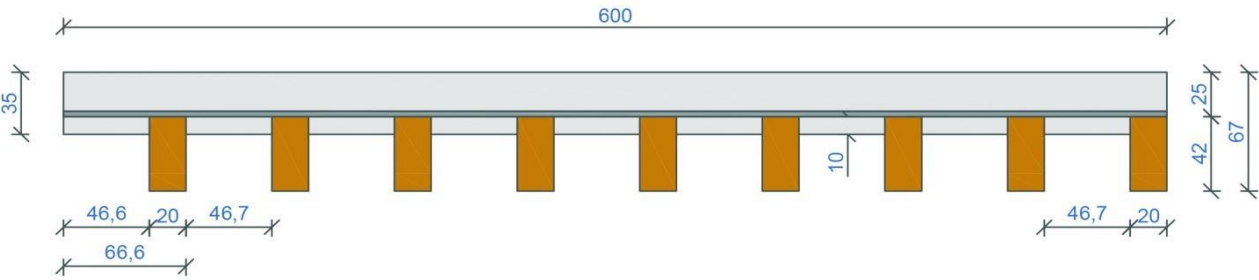
| PRODUCT | α_w | 125 | 250 | 500 | 1000 | 2000 | 4000 |
|---------|------------|------|------|------|------|------|------|
| 8x20/42 | 0,80 | 0,50 | 0,75 | 0,85 | 0,95 | 0,90 | 0,80 |

Sound absorption chart

*All dimensions are specified in mm



REAL WOOD grill ceiling and wall claddings



Technical specification

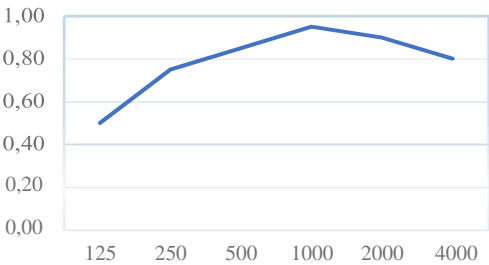
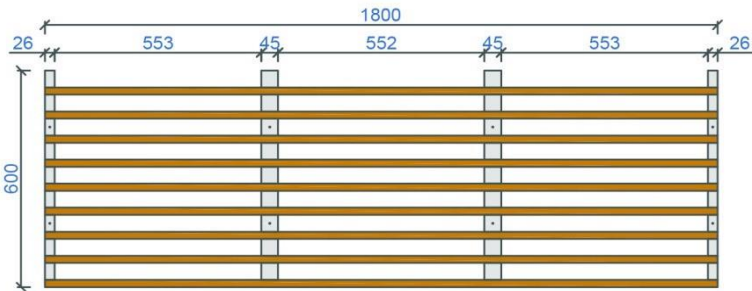
| | |
|----------------------------------|---|
| Base material | Real wood: Pine, Larch, Birch, Oak etc. |
| Lath size wx/hx | 20x42mm |
| Slotted cross bar - black coated | 45x35mm+26x35mm |
| No. of blades/panel 600mm | 9 |
| Element weight kg/m2 | 6,12 |
| Surface | Standard WB coating , oil /wax coating, staining etc. |
| Fire classification | up to B s1.d.0 , EU norm EN 13501-1 |
| Humidity resistance | 70% standard to 95% treated |
| Acoustical treatment | Black Topiq 15mm mineral fibre pad or acoustical fleece 155g/m2 |
| Open area | 70% |
| Suspension | Standard plaster board studs or wood trims - direct mount |

Sound absorption - using lay- in 15mm TOPIQ mineral fibre pad

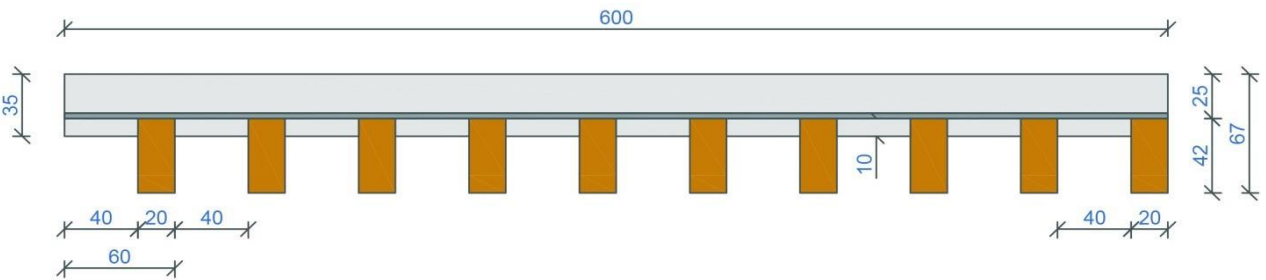
| PRODUCT | α_w | 125 | 250 | 500 | 1000 | 2000 | 4000 |
|---------|------------|------|------|------|------|------|------|
| 9x20/42 | 0,80 | 0,50 | 0,75 | 0,85 | 0,95 | 0,90 | 0,80 |

Sound absorption chart

*All dimensions are specified in mm



REAL WOOD grill ceiling and wall claddings



Technical specification

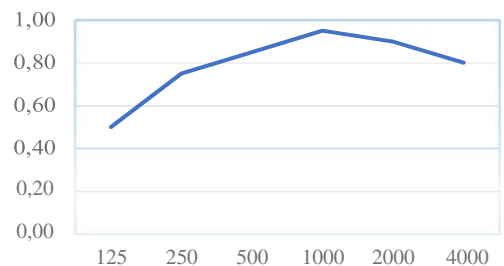
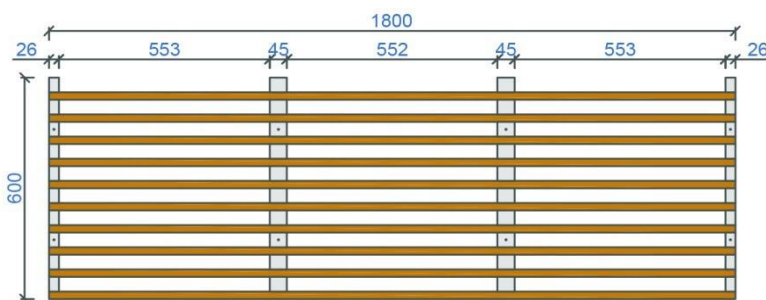
| | |
|----------------------------------|---|
| Base material | Real wood: Pine, Larch, Birch, Oak etc. |
| Lath size wx/hx | 20x42mm |
| Slotted cross bar - black coated | 45x35mm+26x35mm |
| No. of blades/panel 600mm | 10 |
| Element weight kg/m2 | 6,80 |
| Surface | Standard WB coating , oil /wax coating, staining etc. |
| Fire classification | up to B s1.d.0 , EU norm EN 13501-1 |
| Humidity resistance | 70% standard to 95% treated |
| Acoustical treatment | Black Topiq 15mm mineral fibre pad or acoustical fleece 155g/m2 |
| Open area | 67% |
| Suspension | Standard plaster board studs or wood trims - direct mount |

Sound absorption - using lay- in 15mm TOPIQ mineral fibre pad

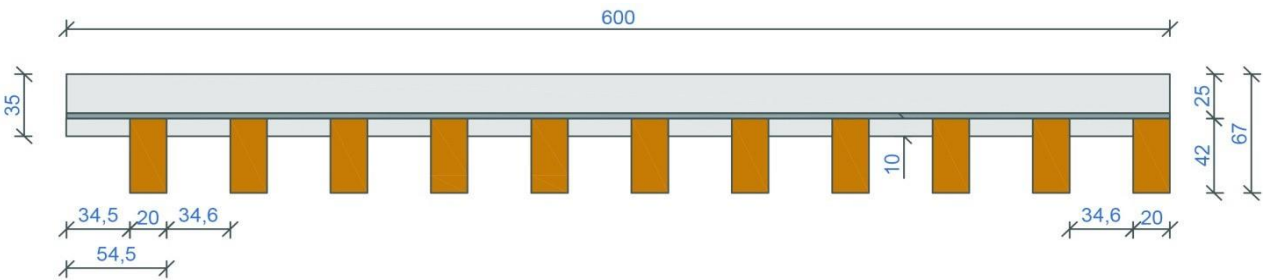
| PRODUCT | α_w | 125 | 250 | 500 | 1000 | 2000 | 4000 |
|----------|------------|------|------|------|------|------|------|
| 10x20/42 | 0,80 | 0,50 | 0,75 | 0,85 | 0,95 | 0,90 | 0,80 |

Sound absorption chart

*All dimensions are specified in mm



REAL WOOD grill ceiling and wall claddings



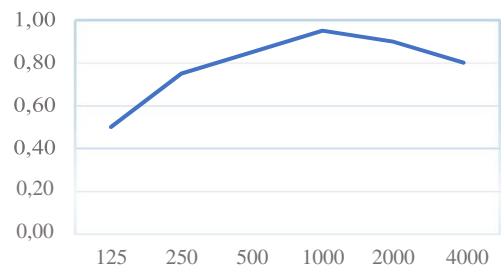
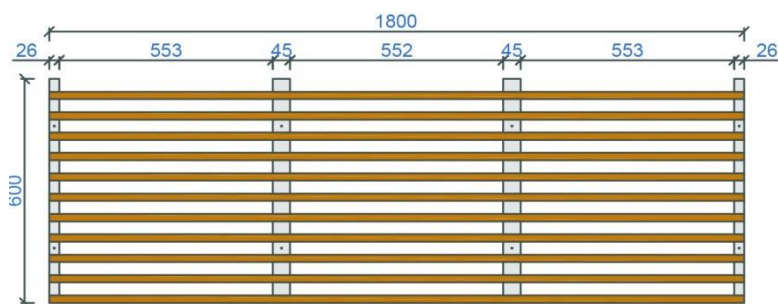
Technical specification

| | |
|----------------------------------|---|
| Base material | Real wood: Pine, Larch, Birch, Oak etc. |
| Lath size wx/hx | 20x42mm |
| Slotted cross bar - black coated | 45x35mm+26x35mm |
| No. of blades/panel 600mm | 11 |
| Element weight kg/m2 | 7,48 |
| Surface | Standard WB coating , oil /wax coating, staining etc. |
| Fire classification | up to B s1.d.0 , EU norm EN 13501-1 |
| Humidity resistance | 70% standard to 95% treated |
| Acoustical treatment | Black Topiq 15mm mineral fibre pad or acoustical fleece 155g/m2 |
| Open area | 63% |
| Suspension | Standard plaster board studs or wood trims - direct mount |

Sound absorption - using lay- in 15mm TOPIQ mineral fibre pad

| PRODUCT | α_w | 125 | 250 | 500 | 1000 | 2000 | 4000 |
|----------|------------|------|------|------|------|------|------|
| 11x20/42 | 0,80 | 0,50 | 0,75 | 0,85 | 0,95 | 0,90 | 0,80 |

Sound absorption chart



| PRODUCT | α_w | 250 | 500 | 1000 | 2000 | 4000 |
|---------|------------|-----|-----|------|------|------|
|---------|------------|-----|-----|------|------|------|

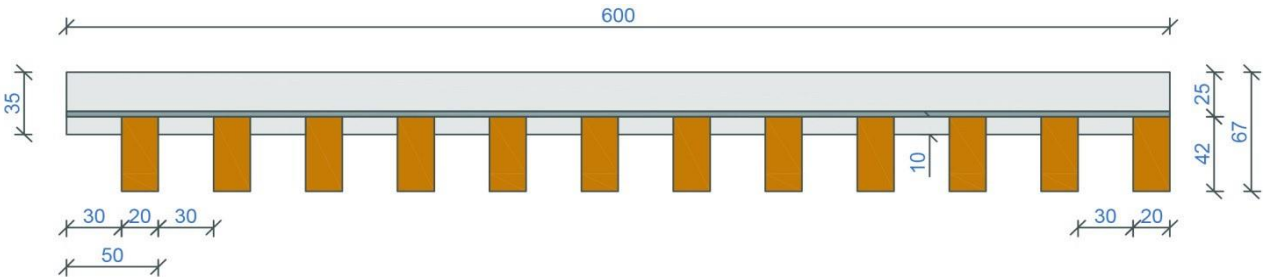
0,20

0,00

125 250 500 1000 2000 4000

| | | | | | | |
|----------|------|------|------|------|------|------|
| 12x20/42 | 0,80 | 0,75 | 0,85 | 0,95 | 0,90 | 0,80 |
|----------|------|------|------|------|------|------|

SONICLINE 12x20/42

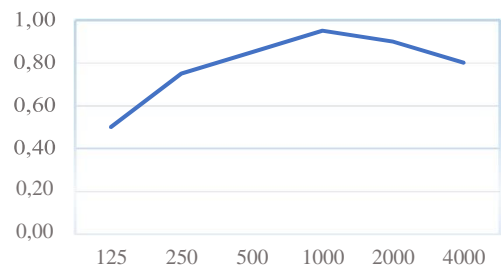
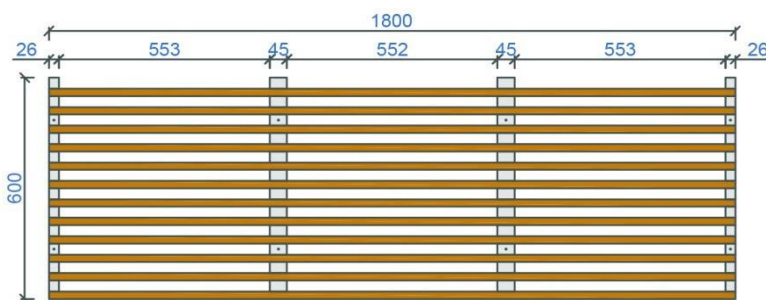


*All dimensions are specified in mm

Technical specification

| | |
|---------------------------------|---|
| Base material | Real wood: Pine, Larch, Birch, Oak etc. |
| Lath size wx/hx | 20x42mm |
| Sloted cross bar - black coated | 45x35mm+26x35mm |
| No. of blades/panel 600mm | 12 |
| Element weight kg/m2 | 8,16 |
| Surface | Standard WB coating , oil /wax coating, staining etc. |
| Fire classification | up to B s1.d.0 , EU norm EN 13501-1 |
| Humidity resistance | 70% standard to 95% treated |
| Acoustical treatment | Black Topiq 15mm mineral fibre pad or acoustical fleece 155g/m2 |
| Open area | 60% |
| Suspension | Standard plaster board studs or wood trims - direct mount |

Sound absorption chart

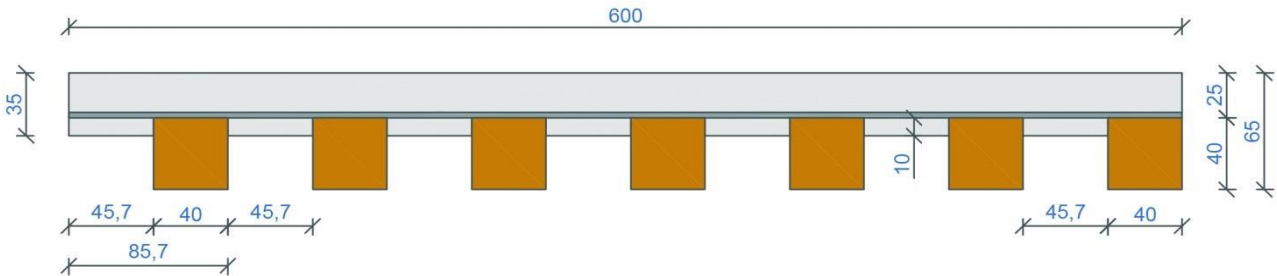


| PRODUCT | α_w | 125 | 250 | 500 | 1000 | 2000 | 4000 |
|---------|------------|-----|-----|-----|------|------|------|
|---------|------------|-----|-----|-----|------|------|------|



| | | | | | | | |
|---------|------|------|------|------|------|------|------|
| 7x40/40 | 0,80 | 0,50 | 0,75 | 0,85 | 0,95 | 0,90 | 0,80 |
|---------|------|------|------|------|------|------|------|

SONICLINE 7x40/40

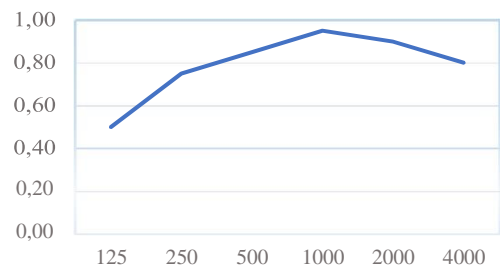
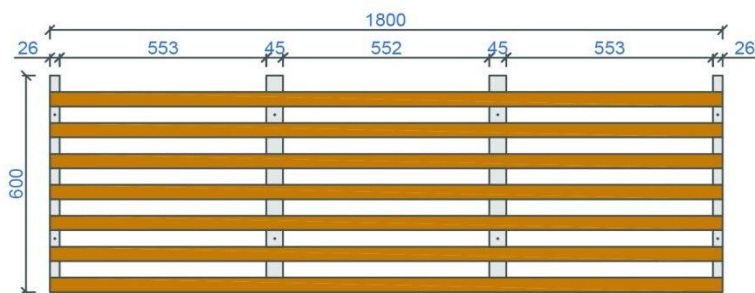


*All dimensions are specified in mm

Technical specification

| | |
|----------------------------------|---|
| Base material | Real wood: Pine, Larch, Birch, Oak etc. |
| Lath size wx/hx | 40x40mm |
| Slotted cross bar - black coated | 45x35mm+26x35mm |
| No. of blades/panel 600mm | 7 |
| Element weight kg/m2 | 9,07 |
| Surface | Standard WB coating , oil /wax coating, staining etc. |
| Fire classification | up to B s1.d.0 , EU norm EN 13501-1 |
| Humidity resistance | 70% standard to 95% treated |
| Acoustical treatment | Black Topiq 15mm mineral fibre pad or acoustical fleece 155g/m2 |
| Open area | 53% |
| Suspension | Standard plaster board studs or wood trims - direct mount |

Sound absorption chart

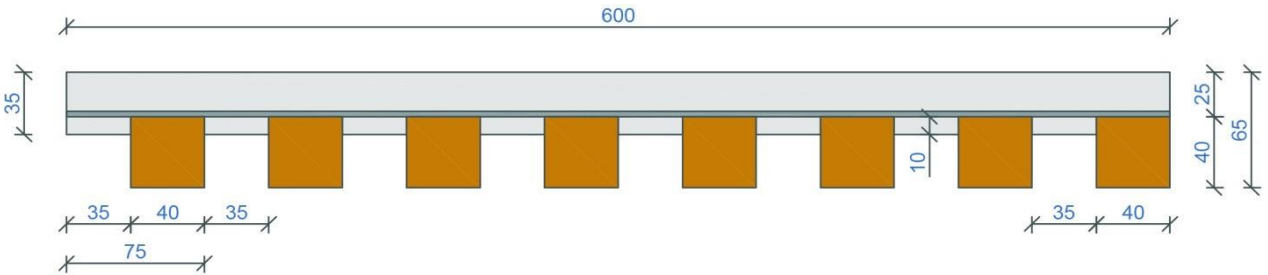


| PRODUCT | α_w | 125 | 250 | 500 | 1000 | 2000 | 4000 |
|---------|------------|-----|-----|-----|------|------|------|
|---------|------------|-----|-----|-----|------|------|------|

0,20
0,00
125 250 500 1000 2000 4000

| | | | | | | | |
|---------|------|------|------|------|------|------|------|
| 8x40/40 | 0,80 | 0,50 | 0,75 | 0,85 | 0,95 | 0,90 | 0,80 |
|---------|------|------|------|------|------|------|------|

SONICLINE 8x40/40

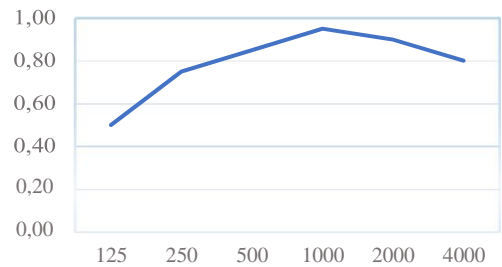
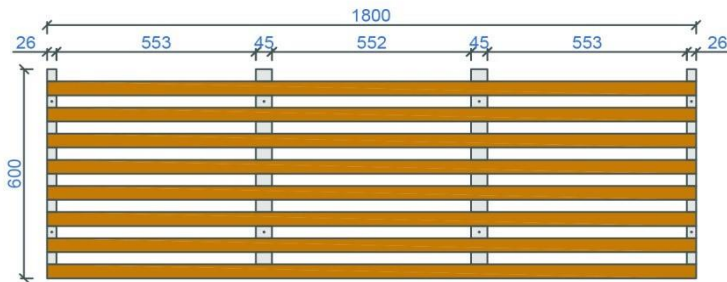


*All dimensions are specified in mm

Technical specification

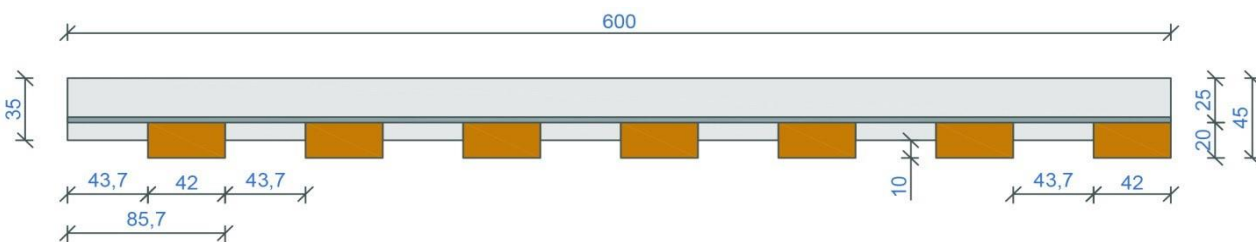
| | |
|---------------------------------|---|
| Base material | Real wood: Pine, Larch, Birch, Oak etc. |
| Lath size wx/hx | 40x40mm |
| Sloted cross bar - black coated | 45x35mm+26x35mm |
| No. of blades/panel 600mm | 8 |
| Element weight kg/m2 | 10,37 |
| Surface | Standard WB coating , oil /wax coating, staining etc. |
| Fire classification | up to B s1.d.0 , EU norm EN 13501-1 |
| Humidity resistance | 70% standard to 95% treated |
| Acoustical treatment | Black Topiq 15mm mineral fibre pad or acoustical fleece 155g/m2 |
| Open area | 47% |
| Suspension | Standard plaster board studs or wood trims - direct mount |

Sound absorption chart



0,20
0,00
125 250 500 1000 2000 4000

REAL WOOD grill ceiling and wall claddings



*All dimensions are specified in mm

Technical specification

| | |
|---------------------------------|---|
| Base material | Real wood: Pine, Larch, Birch, Oak etc. |
| Lath size wx/hx | 42x20mm |
| Sloted cross bar - black coated | 45x35mm+26x35mm |
| No. of blades/panel 600mm | 7 |
| Element weight kg/m2 | 4,76 |
| Surface | Standard WB coating , oil /wax coating, staining etc. |
| Fire classification | up to B s1.d.0 , EU norm EN 13501-1 |
| Humidity resistance | 70% standard to 95% treated |
| Acoustical treatment | Black Topiq 15mm mineral fibre pad or acoustical fleece 155g/m2 |
| Open area | 51% |
| Suspension | Standard plaster board studs or wood trims - direct mount |

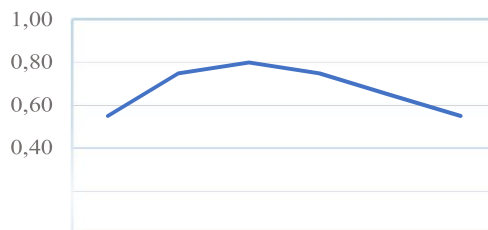
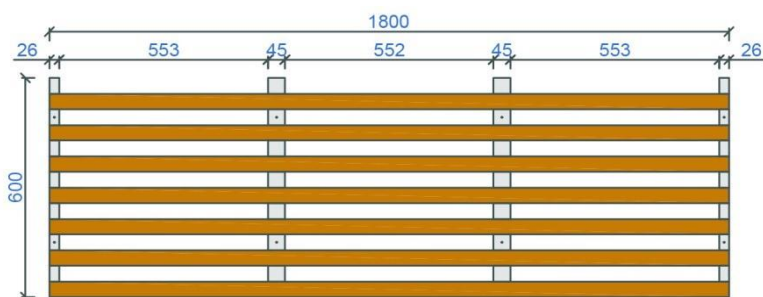
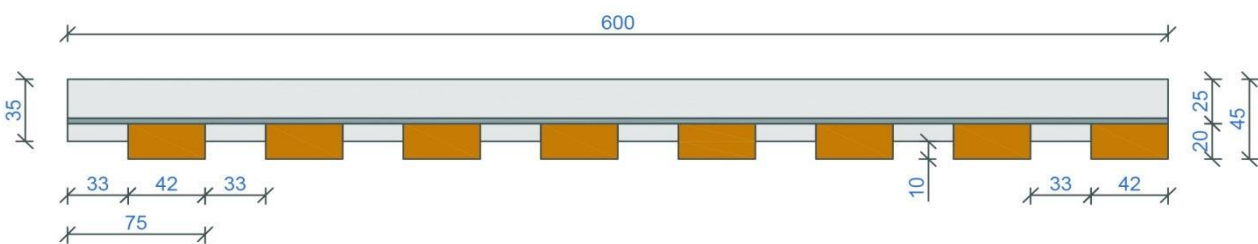
Sound absorption - using lay- in 15mm TOPIQ mineral fibre pad

| PRODUCT | α_w | 125 | 250 | 500 | 1000 | 2000 | 4000 |
|---------|------------|------|------|------|------|------|------|
| 7x42/20 | 0,55 | 0,55 | 0,75 | 0,80 | 0,75 | 0,65 | 0,55 |

Sound absorption chart



REAL WOOD grill ceiling and wall claddings



*All dimensions are specified in mm

Technical specification

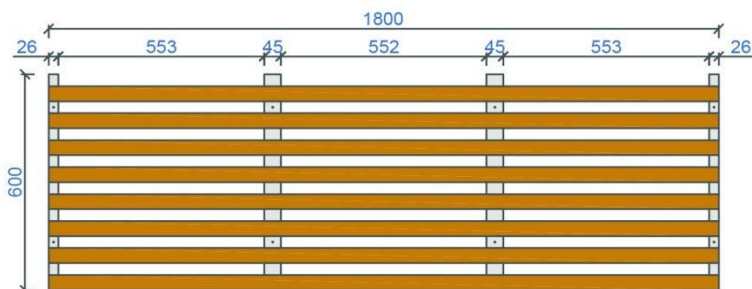
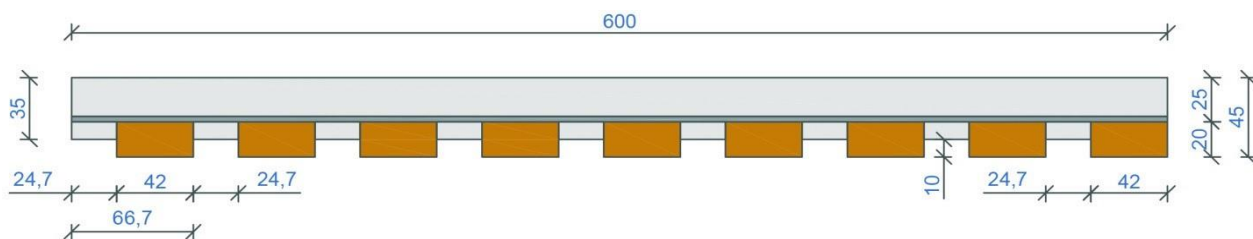
| | |
|----------------------------------|---|
| Base material | Real wood: Pine, Larch, Birch, Oak etc. |
| Lath size wx/hx | 42x20mm |
| Slotted cross bar - black coated | 45x35mm+26x35mm |
| No. of blades/panel 600mm | 8 |
| Element weight kg/m ² | 5,44 |
| Surface | Standard WB coating , oil /wax coating, staining etc. |
| Fire classification | up to B s1.d.0 , EU norm EN 13501-1 |
| Humidity resistance | 70% standard to 95% treated |
| Acoustical treatment | Black Topiq 15mm mineral fibre pad or acoustical fleece 155g/m ² |
| Open area | 44% |
| Suspension | Standard plaster board studs or wood trims - direct mount |

Sound absorption - using lay- in 15mm TOPIQ mineral fibre pad

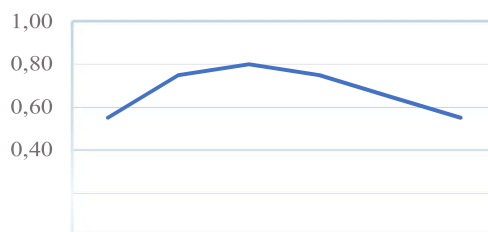
| PRODUCT | α_w | 125 | 250 | 500 | 1000 | 2000 | 4000 |
|---------|------------|------|------|------|------|------|------|
| 8x42/20 | 0,55 | 0,55 | 0,75 | 0,80 | 0,75 | 0,65 | 0,55 |



REAL WOOD grill ceiling and wall claddings



Sound absorption chart



*All dimensions are specified in mm

Technical specification

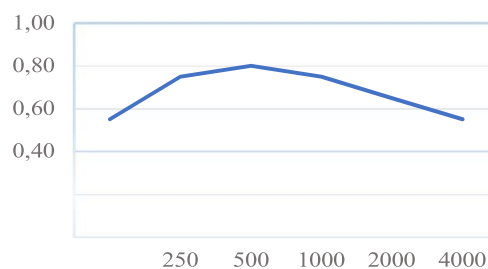
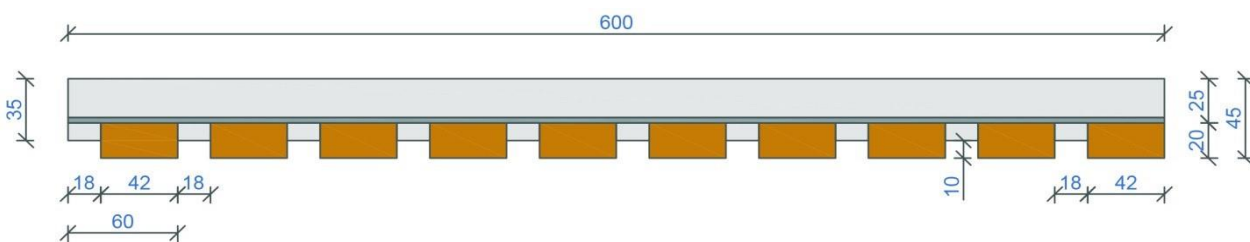
| | |
|----------------------------------|---|
| Base material | Real wood: Pine, Larch, Birch, Oak etc. |
| Lath size wx/hx | 42x20mm |
| Slotted cross bar - black coated | 45x35mm+26x35mm |
| No. of blades/panel 600mm | 9 |
| Element weight kg/m ² | 6,12 |
| Surface | Standard WB coating , oil /wax coating, staining etc. |
| Fire classification | up to B s1.d.0 , EU norm EN 13501-1 |
| Humidity resistance | 70% standard to 95% treated |
| Acoustical treatment | Black Topiq 15mm mineral fibre pad or acoustical fleece 155g/m ² |
| Open area | 37% |
| Suspension | Standard plaster board studs or wood trims - direct mount |

Sound absorption - using lay- in 15mm TOPIQ mineral fibre pad

| PRODUCT | α_w | 125 | 250 | 500 | 1000 | 2000 | 4000 |
|---------|------------|------|------|------|------|------|------|
| 9x42/20 | 0,55 | 0,55 | 0,75 | 0,80 | 0,75 | 0,65 | 0,55 |

Sound absorption chart

REAL WOOD grill ceiling and wall claddings



VARION d.o.o., Pod lipami 8, 1370 LOGATEC, SLOVENIA

www.varion.si e-mail: info@varion.si

*All dimensions are specified in mm

Technical specification

| | |
|----------------------------------|---|
| Base material | Real wood: Pine, Larch, Birch, Oak etc. |
| Lath size wx/hx | 42x20mm |
| Slotted cross bar - black coated | 45x35mm+26x35mm |
| No. of blades/panel 600mm | 10 |
| Element weight kg/m2 | 6,80 |
| Surface | Standard WB coating , oil /wax coating, staining etc. |
| Fire classification | up to B s1.d.0 , EU norm EN 13501-1 |
| Humidity resistance | 70% standard to 95% treated |
| Acoustical treatment | Black Topiq 15mm mineral fibre pad or acoustical fleece 155g/m2 |
| Open area | 30% |

0,20

0,00

125 250 500 1000 2000 4000

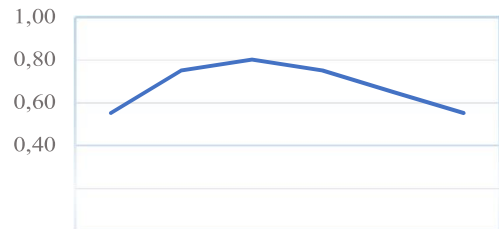
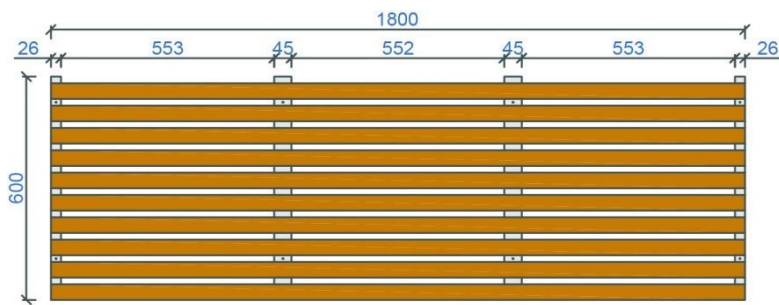
REAL WOOD grill ceiling and wall claddings

| | |
|------------|---|
| Suspension | Standard plaster board studs or wood trims - direct mount |
|------------|---|

Sound absorption - using lay- in 15mm TOPIQ mineral fibre pad

| PRODUCT | α_w | 125 | 250 | 500 | 1000 | 2000 | 4000 |
|----------|------------|------|------|------|------|------|------|
| 10x42/20 | 0,55 | 0,55 | 0,75 | 0,80 | 0,75 | 0,65 | 0,55 |

Sound absorption chart



| PRODUCT | α_w | 125 | 250 | | 1000 | 2000 | 4000 |
|---------|------------|-----|-----|--|------|------|------|
|---------|------------|-----|-----|--|------|------|------|

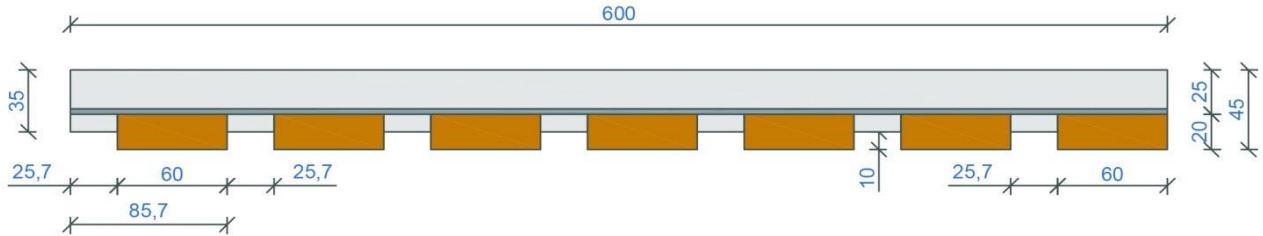
0,20

0,00

125 250 500 1000 2000 4000

| | | | | | | |
|---------|------|------|------|------|------|------|
| 7x60/20 | 0,55 | 0,55 | 0,75 | 0,75 | 0,65 | 0,55 |
|---------|------|------|------|------|------|------|

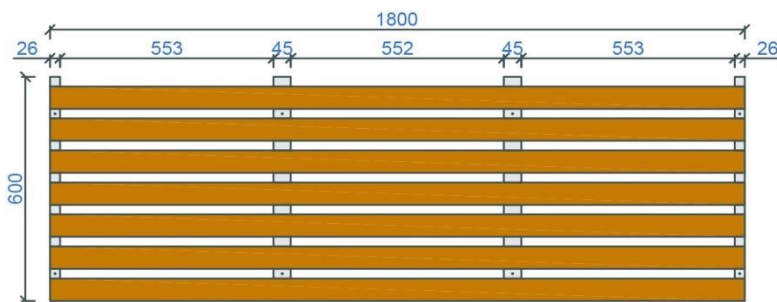
SONICLINE 7x60/20



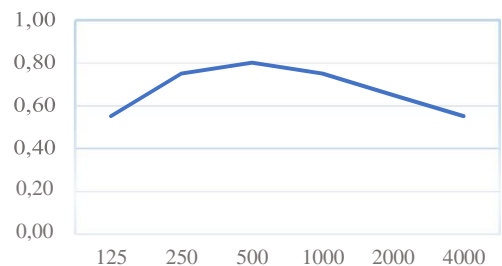
*All dimensions are specified in mm

Technical specification

| | |
|----------------------------------|---|
| Base material | Real wood: Pine, Larch, Birch, Oak etc. |
| Lath size wx/hx | 60x20mm |
| Slotted cross bar - black coated | 45x35mm+26x35mm |
| No. of blades/panel 600mm | 7 |
| Element weight kg/m ² | 6,80 |
| Surface | Standard WB coating , oil /wax coating, staining etc. |
| Fire classification | up to B s1.d.0 , EU norm EN 13501-1 |
| Humidity resistance | 70% standard to 95% treated |
| Acoustical treatment | Black Topiq 15mm mineral fibre pad or acoustical fleece 155g/m ² |
| Open area | 30% |
| Suspension | Standard plaster board studs or wood trims - direct mount |



Sound absorption chart

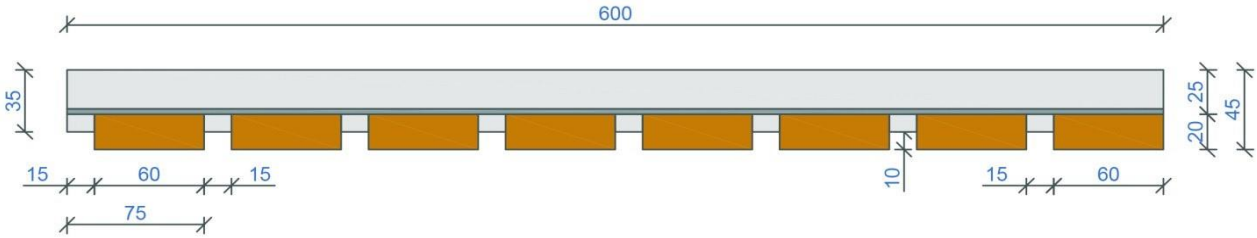


| PRODUCT | α_w | 125 | 250 | 500 | 1000 | 2000 | 4000 |
|---------|------------|-----|-----|-----|------|------|------|
|---------|------------|-----|-----|-----|------|------|------|



| | | | | | | | |
|---------|------|------|------|------|------|------|------|
| 8x60/20 | 0,55 | 0,55 | 0,75 | 0,80 | 0,75 | 0,65 | 0,55 |
|---------|------|------|------|------|------|------|------|

SONICLINE 8x60/20



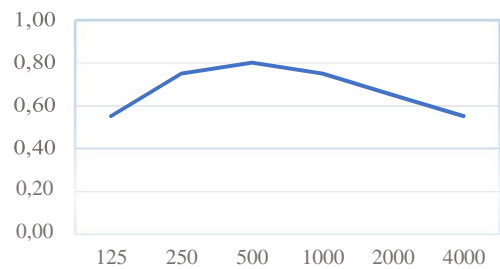
*All dimensions are specified in mm

Technical specification

| | |
|----------------------------------|---|
| Base material | Real wood: Pine, Larch, Birch, Oak etc. |
| Lath size wx/hx | 60x20mm |
| Slotted cross bar - black coated | 45x35mm+26x35mm |
| No. of blades/panel 600mm | 8 |
| Element weight kg/m2 | 7,78 |
| Surface | Standard WB coating , oil /wax coating, staining etc. |
| Fire classification | up to B s1.d.0 , EU norm EN 13501-1 |
| Humidity resistance | 70% standard to 95% treated |
| Acoustical treatment | Black Topiq 15mm mineral fibre pad or acoustical fleece 155g/m2 |
| Open area | 20% |
| Suspension | Standard plaster board studs or wood trims - direct mount |



Sound absorption chart



0,20
0,00
125 250 500 1000 2000 4000